

INTENTIONALLY

LEFT

BLANK

INTENTIONALLY

LEFT

BLANK

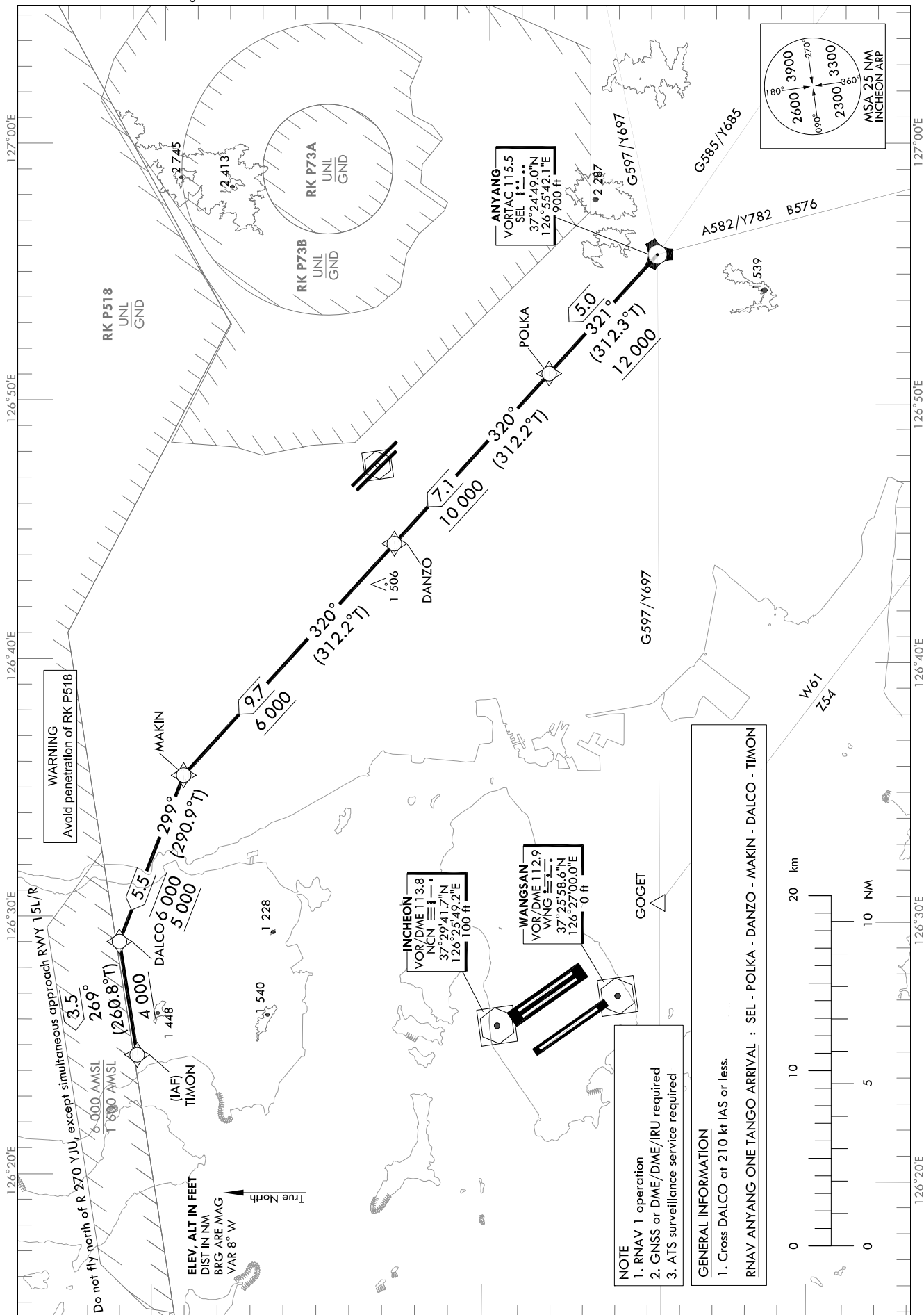
STANDARD ARRIVAL CHART
INSTRUMENT (STAR) - ICAO

TRANSITION ALT 14 000
TRANSITION LVL FL 140

SEOUL APP 119.75
119.1
INCHEON TWR 118.2
118.8

SEOUL/Incheon Intl(RKSI)
RWY 15L/R
RNAV SEL 1T

Note : Arrival under ICAO Flight Procedures.



WARNING
Avoid penetration of RK P518

Do not fly north of R 270 YIU, except simultaneous approach RWY 15L/R
6 000 AMSL
1 200 AMSL
ELEV, ALT IN FEET
DIST IN NM
BRG ARE MAG
VAR 8° W
True North

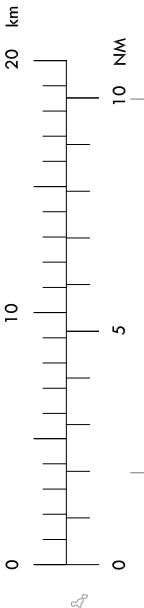
INCHON
VOR/DME 113.8
NCN
37°29'41.7"N
126°25'49.2"E
100 ft

WANGSAN
VOR/DME 112.9
WNG
37°25'58.6"N
126°27'00.0"E
0 ft

ANYANG
VORTAC 115.5
SEL
37°24'49.0"N
126°55'42.1"E
900 ft

NOTE
1. RNAV 1 operation
2. GNSS or DME/DME/IRU required
3. ATS surveillance service required

GENERAL INFORMATION
1. Cross DALCO at 210 kt IAS or less.
RNAV ANYANG ONE TANGO ARRIVAL : SEL - POLKA - DANZO - MAKIN - DALCO - TIMON



Change : Amended coordinate format.

SEOUL/Incheon Intl(RKSI)
RWY 15L/R
RNAV SEL 1T

AERONAUTICAL DATA TABULATION

Standard Instrument Arrival Procedure Coding Tables

Serial Number	Path Descriptor	Waypoint Identifier	Fly-over	Course/Track °M(°T)	Distance (NM)	Turn direction	Altitude (ft)	Speed (kt)	Coordinates	VPA/TCH	Navigation specification	Remarks
001	IF	SEL	-	-	-	-	-	-	37°24'49.0"N 126°55'42.1"E (R 354 SOT/D20, R 110 NCN /D24)	-	RNAV 1	-
002	TF	POLKA	-	321 (312.3)	5.0	-	+12 000	-	37°28'09.8"N 126°51'04.8"E (R 102 NCN/D20, R 092 WNG/D19)	-	RNAV 1	-
003	TF	DANZO	-	320 (312.2)	7.1	-	+10 000	-	37°32'55.8"N 126°44'28.8"E (R 086 NCN/D15, R 072 WNG/D16)	-	RNAV 1	-
004	TF	MAKIN	-	320 (312.2)	9.7	-	+6 000	-	37°39'24.5"N 126°35'28.2"E (R 046 NCN/D12, R 035 WNG/D15)	-	RNAV 1	-
005	TF	DALCO	-	299 (290.9)	5.5	-	-6 000 +5 000	-210	37°41'22.0"N 126°28'59.8"E (R 020 NCN/D12, R 014 WNG/D15)	-	RNAV 1	-
006	TF	TIMON	-	269 (260.8)	3.5	-	+4 000	-210	37°40'48.0"N 126°24'36.1"E (R 363 NCN/D11, R 001 WNG/D15)	-	RNAV 1	IAF

Change : Amended coordinate format.

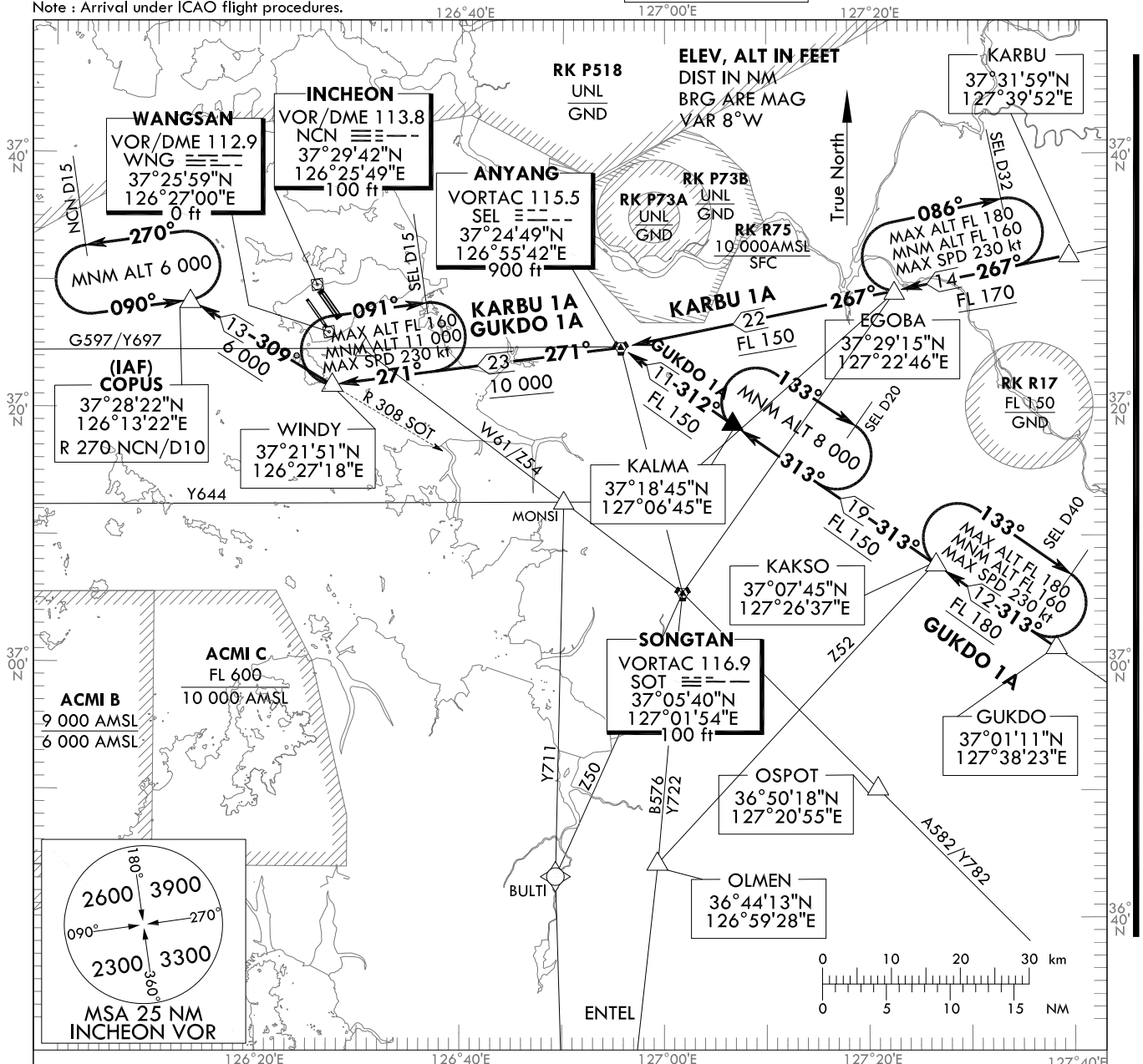
**STANDARD ARRIVAL CHART
INSTRUMENT (STAR) - ICAO**

TRANSITION ALT 14 000
TRANSITION LVL FL 140

SEOUL APP 119.75
INCHEON TWR 119.1
118.2
118.8

**SEOUL/Incheon Intl(RKSI)
RWY 15L/R
GUKDO 1A, KARBU 1A**

Note : Arrival under ICAO flight procedures.



GENERAL INFORMATION

1. For profile descent with clearance "Descend via the (STAR name and number) arrival", pilots should commence descent after passing the First Fix/Waypoint of each arrival.
2. If unable to comply with flight restrictions, advise ATC for alternatives.
3. Maximum holding speed is 230 kt IAS at EGOBA, KAKSO, KALMA and WINDY, 200 kt IAS at COPUS

DESIGNATOR	FROM	ROUTE	DESCENT ALTITUDE
GUKDO ONE ALPHA	G585 /Y685	GUKDO - KAKSO - KALMA - SEL - WINDY - COPUS	At or above FL 180 by KAKSO, FL 150 by SEL, 10 000 ft by WINDY, and 6 000 ft by COPUS
KARBU ONE ALPHA	G597 /Y697	KARBU - EGOBA - SEL - WINDY - COPUS	At or above FL 170 by EGOBA, FL 150 by SEL, 10 000 ft by WINDY, and 6 000 ft by COPUS

Change : Amended coordinate format.

INTENTIONALLY

LEFT

BLANK

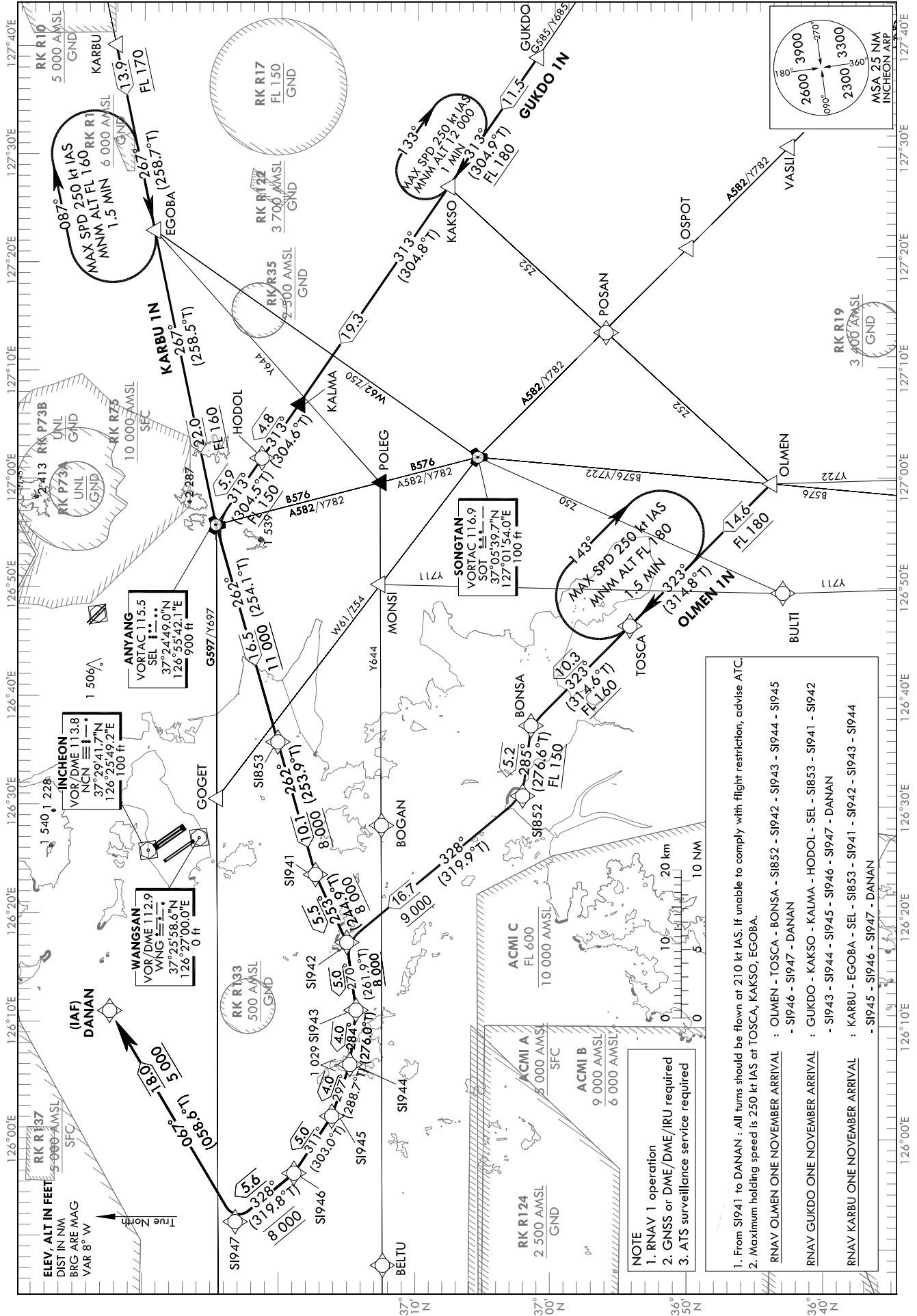
STANDARD ARRIVAL CHART
INSTRUMENT (STAR) - ICAO

TRANSITION ALT 14 000
TRANSITION LVL FL 140

SEOUL APP 119.75
119.1
INCHEON TWR 118.2
118.8

SEOUL/Incheon Intl(RKSI)
RWY 15L/R RWY 16
RNAV OLMEN 1N
RNAV GUKDO 1N RNAV KARBU 1N

Note : Arrival under ICAO Flight Procedures.



SEOUL/Incheon Intl(RKSI)
RWY 15L/R RWY 16
RNAV OLMEN 1N, RNAV GUKDO 1N AERONAUTICAL DATA TABULATION

Standard Instrument Arrival Procedure Coding Tables

Serial Number	Path Descriptor	Waypoint Identifier	Fly-over	Course/Track °M(°T)	Distance (NM)	Turn direction	Altitude (ft)	Speed (kt)	Coordinates	VPA/TCH	Navigation specification	Remarks
001	IF	OLMEN	-	-	-	-	-	-	36°44'13.4"N 126°59'27.6"E (R 184 SEL/D41, R 193 SOT/D22)	-	RNAV 1	-
002	TF	TOSCA	-	323 (314.8)	14.6	-	+FL 180	-	36°54'31.8"N 126°46'30.1"E (R 202 SEL/D31, R 236 SOT/D17)	-	RNAV 1	-
003	TF	BONSA	-	323 (314.6)	10.3	-	+FL 160	-	37°01'44.4"N 126°37'23.0"E (R 220 SEL/D27, R 267 SOT/D20)	-	RNAV 1	-
004	TF	SI852	-	285 (276.6)	5.2	-	+FL 150	-	37°02'20.0"N 126°30'58.0"E (R 179 NCN/D28, R 180 WNG/D24)	-	RNAV 1	-
005	TF	SI942	-	328 (319.9)	16.7	-	+9 000	@210	37°15'07.7"N 126°17'29.1"E (R 213 NCN/D16, R 223 WNG/D13)	-	RNAV 1	-
006	TF	SI943	-	270 (261.9)	5.0	-	+8 000	@210	37°14'25.0"N 126°11'17.2"E (R 225 NCN/D19, R 235 WNG/D17)	-	RNAV 1	-
007	TF	SI944	-	284 (276.0)	4.0	-	+8 000	@210	37°14'49.9"N 126°06'18.3"E (R 234 NCN/D22, R 244 WNG/D20)	-	RNAV 1	-
008	TF	SI945	-	297 (288.7)	4.0	-	+8 000	@210	37°16'06.8"N 126°01'33.5"E (R 243 NCN/D24, R 252 WNG/D23)	-	RNAV 1	-
009	TF	SI946	-	311 (303.0)	5.0	-	+8 000	@210	37°18'50.2"N 125°56'18.1"E (R 253 NCN/D26, R 262 WNG/D26)	-	RNAV 1	-
010	TF	SI947	-	328 (319.8)	5.6	-	@8 000	@210	37°23'06.0"N 125°51'47.5"E (R 264 NCN/D28, R 272 WNG/D28)	-	RNAV 1	-
011	TF	DANAN	-	067 (058.6)	18.0	-	+5 000	@210	37°32'26.0"N 126°11'04.0"E (R 291 NCN/D12, R 305 WNG/D14)	-	RNAV 1	IAF

Serial Number	Path Descriptor	Waypoint Identifier	Fly-over	Course/Track °M(°T)	Distance (NM)	Turn direction	Altitude (ft)	Speed (kt)	Coordinates	VPA/TCH	Navigation specification	Remarks
001	IF	GUKDO	-	-	-	-	-	-	37°01'10.9"N 127°38'22.6"E (R 132 SEL/D42, R 106 SOT/D30)	-	RNAV 1	-
002	TF	KAKSO	-	313 (304.9)	11.5	-	+FL 180	-	37°07'44.6"N 127°26'37.4"E (R 132 SEL/D30, R 092 SOT/D20)	-	RNAV 1	-
003	TF	KALMA	-	313 (304.8)	19.3	-	-	-	37°18'44.9"N 127°06'44.8"E (R 132 SEL/D11, R 024 SOT/D14)	-	RNAV 1	-
004	TF	HODOL	-	313 (304.6)	4.8	-	-	-	37°21'27.2"N 127°01'49.9"E (R 132 SEL/D6, R 008 SOT/D16)	-	RNAV 1	-
005	TF	SEL	-	313 (304.5)	5.9	-	+FL 150	-	37°24'49.0"N 126°55'42.1"E (R 353 SOT/D20, R 109 NCN/D24)	-	RNAV 1	-
006	TF	SI853	-	262 (254.1)	16.5	-	+11 000	-	37°20'15.1"N 126°35'48.3"E (R 262 SEL/D17, R 313 SOT/D25)	-	RNAV 1	-
007	TF	SI941	-	262 (253.9)	10.1	-	+8 000	@210	37°17'27.0"N 126°23'40.4"E (R 196 NCN/D12, R 205 WNG/D9)	-	RNAV 1	-
008	TF	SI942	-	253 (244.9)	5.5	-	+8 000	@210	37°15'07.7"N 126°17'29.1"E (R 213 NCN/D16, R 223 WNG/D13)	-	RNAV 1	-
009	TF	SI943	-	270 (261.9)	5.0	-	+8 000	@210	37°14'25.0"N 126°11'17.2"E (R 225 NCN/D19, R 235 WNG/D17)	-	RNAV 1	-
010	TF	SI944	-	284 (276.0)	4.0	-	+8 000	@210	37°14'49.9"N 126°06'18.3"E (R 234 NCN/D22, R 244 WNG/D20)	-	RNAV 1	-
011	TF	SI945	-	297 (288.7)	4.0	-	+8 000	@210	37°16'06.8"N 126°01'33.5"E (R 243 NCN/D24, R 252 WNG/D23)	-	RNAV 1	-
012	TF	SI946	-	311 (303.0)	5.0	-	+8 000	@210	37°18'50.2"N 125°56'18.1"E (R 253 NCN/D26, R 262 WNG/D26)	-	RNAV 1	-
013	TF	SI947	-	328 (319.8)	5.6	-	@8 000	@210	37°23'06.0"N 125°51'47.5"E (R 264 NCN/D28, R 272 WNG/D28)	-	RNAV 1	-
014	TF	DANAN	-	067 (058.6)	18.0	-	+5 000	@210	37°32'26.0"N 126°11'04.0"E (R 291 NCN/D12, R 305 WNG/D14)	-	RNAV 1	IAF

Change : Amended coordinate format.

SEOUL/Incheon Intl(RKSI)
RWY 15L/R RWY 16
RNAV KARBU 1N

AERONAUTICAL DATA TABULATION

Standard Instrument Arrival Procedure Coding Tables

Serial Number	Path Descriptor	Waypoint Identifier	Fly-over	Course/Track °M(°T)	Distance (NM)	Turn direction	Altitude (ft)	Speed (kt)	Coordinates	VPA/TCH	Navigation specification	Remarks
001	IF	KARBU	-	-	-	-	-	-	37°31'59.0"N 127°39'52.0"E (R 086 SEL/D36, R 057 SOT/D40)	-	RNAV 1	-
002	TF	EGOBA	-	267 (258.7)	13.9	-	+FL 170	-	37°29'14.7"N 127°22'45.9"E (R 086 SEL/D22, R 043 SOT/D29)	-	RNAV 1	-
003	TF	SEL	-	267 (258.5)	22.0	-	+FL 160	-	37°24'49.0"N 126°55'42.1"E (R 353 SOT/D20, R 109 NCN/D24)	-	RNAV 1	-
004	TF	SI853	-	262 (254.1)	16.5	-	+11 000	-	37°20'15.1"N 126°35'48.3"E (R 262 SEL/D17, R 313 SOT/D25)	-	RNAV 1	-
005	TF	SI941	-	262 (253.9)	10.1	-	+8 000	@210	37°17'27.0"N 126°23'40.4"E (R 196 NCN/D12, R 205 WNG/D9)	-	RNAV 1	-
006	TF	SI942	-	253 (244.9)	5.5	-	+8 000	@210	37°15'07.7"N 126°17'29.1"E (R 213 NCN/D16, R 223 WNG/D13)	-	RNAV 1	-
007	TF	SI943	-	270 (261.9)	5.0	-	+8 000	@210	37°14'25.0"N 126°11'17.2"E (R 225 NCN/D19, R 235 WNG/D17)	-	RNAV 1	-
008	TF	SI944	-	284 (276.0)	4.0	-	+8 000	@210	37°14'49.9"N 126°06'18.3"E (R 234 NCN/D22, R 244 WNG/D20)	-	RNAV 1	-
009	TF	SI945	-	297 (288.7)	4.0	-	+8 000	@210	37°16'06.8"N 126°01'33.5"E (R 243 NCN/D24, R 252 WNG/D23)	-	RNAV 1	-
010	TF	SI946	-	311 (303.0)	5.0	-	+8 000	@210	37°18'50.2"N 125°56'18.1"E (R 253 NCN/D26, R 262 WNG/D26)	-	RNAV 1	-
011	TF	SI947	-	328 (319.8)	5.6	-	@8 000	@210	37°23'06.0"N 125°51'47.5"E (R 264 NCN/D28, R 272 WNG/D28)	-	RNAV 1	-
012	TF	DANAN	-	067 (058.6)	18.0	-	+5 000	@210	37°32'26.0"N 126°11'04.0"E (R 291 NCN/D12, R 305 WNG/D14)	-	RNAV 1	IAF

HOLDING PROCEDURE

Holding Identification	Path Descriptor	Waypoint Identifier	Fly-over	Course/Track °M(°T)	Time (min)	Turn direction	Altitude (ft)	Speed (kt)	Coordinates	VPA/TCH	Navigation specification	Remarks
RNAV OLMEN 1N	-	TOSCA	Y	323 (314.8)	1.5	R	+FL 180	-250	36°54'31.8"N 126°46'30.1"E (R 202 SEL/D31, R 236 SOT/D17)	-	RNAV 1	-
RNAV GUKDO 1N	-	KAKSO	Y	313 (304.9)	1	R	+12 000	-250	37°07'44.6"N 127°26'37.4"E (R 132 SEL/D30, R 092 SOT/D20)	-	RNAV 1	-
RNAV KARBU 1N	-	EGOBA	Y	267 (258.7)	1.5	R	+FL 160	-250	37°29'14.7"N 127°22'45.9"E (R 086 SEL/D22, R 043 SOT/D29)	-	RNAV 1	-

Change : Amended coordinate format.

INTENTIONALLY

LEFT

BLANK

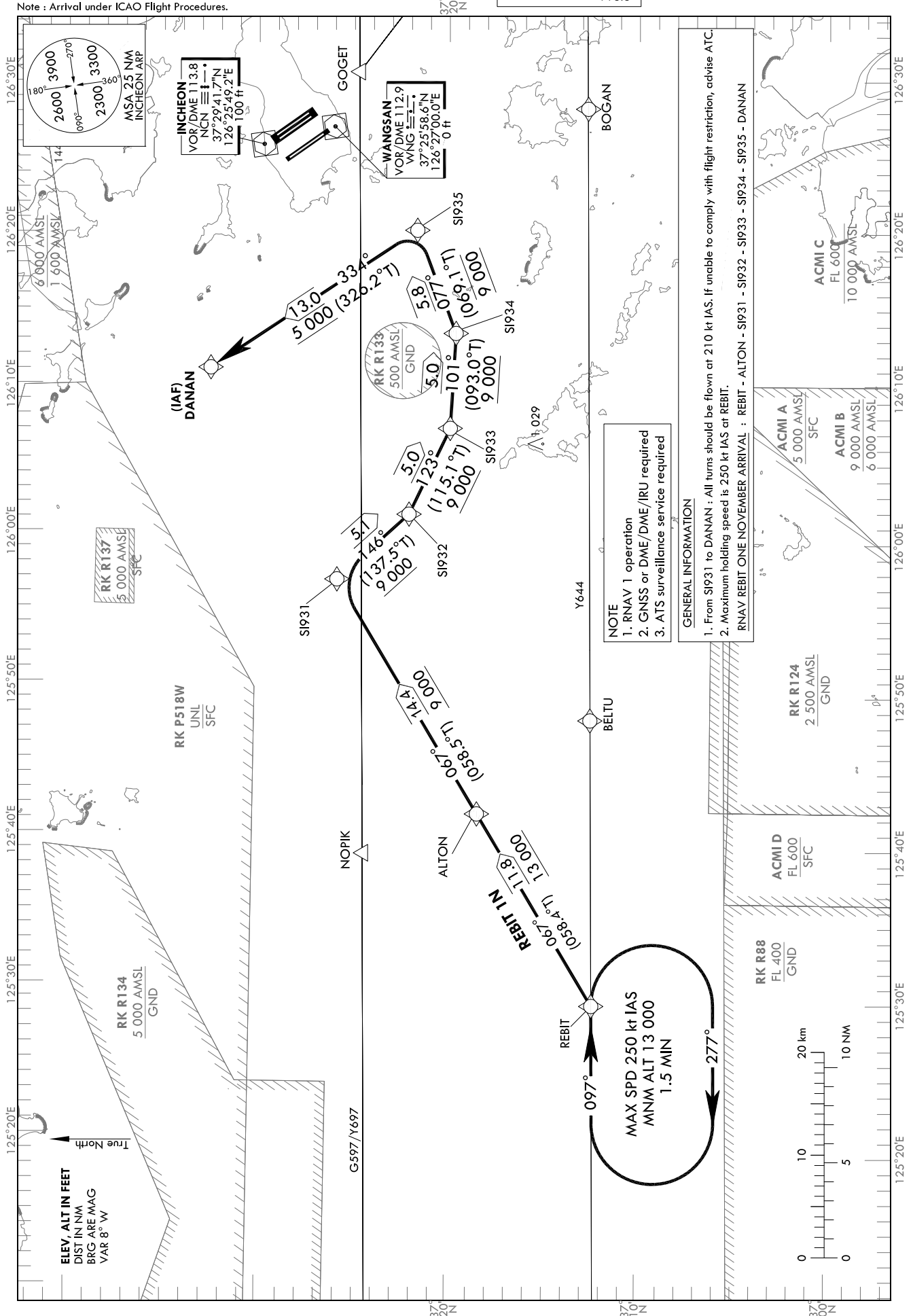
STANDARD ARRIVAL CHART
INSTRUMENT (STAR) - ICAO

TRANSITION ALT 14 000
TRANSITION LVL FL 140

SEOUL APP 119.75
119.1
INCHEON TWR 118.2
118.8

SEOUL/Incheon Intl(RKSI)
RWY 15L/R RWY 16
RNAV REBIT 1N

Note : Arrival under ICAO Flight Procedures.



SEOUL/Incheon Intl(RKSI)
RWY 15L/R RWY 16
RNAV REBIT 1N

AERONAUTICAL DATA TABULATION

Standard Instrument Arrival Procedure Coding Tables

Serial Number	Path Descriptor	Waypoint Identifier	Fly-over	Course/Track °M(°T)	Distance (NM)	Turn direction	Altitude (ft)	Speed (kt)	Coordinates	VPA/TCH	Navigation specification	Remarks
001	IF	REBIT	-	-	-	-	-	-	37°12'03.0"N 125°29'12.7"E (R 268 SEL/D70, R 283 SOT/D74)	-	RNAV 1	-
002	TF	ALTON	-	067 (058.4)	11.8	-	+13 000	-	37°18'12.6"N 125°41'46.1"E (R 272 SEL/D59, R 289 SOT/D65)	-	RNAV 1	-
003	TF	SIP31	-	067 (058.5)	14.4	-	+9 000	@210	37°25'42.2"N 125°57'09.0"E (R 268 NCN/D23, R 277 WING/D24)	-	RNAV 1	-
004	TF	SIP32	-	146 (137.5)	5.1	-	+9 000	@210	37°21'56.6"N 126°01'28.0"E (R 256 NCN/D21, R 267 WING/D21)	-	RNAV 1	-
005	TF	SIP33	-	123 (115.1)	5.0	-	+9 000	@210	37°19'48.9"N 126°07'08.5"E (R 244 NCN/D18, R 257 WING/D17)	-	RNAV 1	-
006	TF	SIP34	-	101 (093.0)	5.0	-	+9 000	@210	37°19'32.9"N 126°13'24.1"E (R 232 NCN/D14, R 247 WING/D13)	-	RNAV 1	-
007	TF	SIP35	-	077 (069.1)	5.8	-	@9 000	@210	37°21'36.5"N 126°20'11.1"E (R 217 NCN/D9, R 239 WING/D7)	-	RNAV 1	-
008	TF	DANAN	-	334 (326.2)	13.0	-	+5 000	@210	37°32'26.0"N 126°11'04.0"E (R 291 NCN/D12, R 305 WING/D14)	-	RNAV 1	-

HOLDING PROCEDURE

Holding Identification	Path Descriptor	Waypoint Identifier	Fly-over	Course/Track °M(°T)	Time (min)	Turn direction	Altitude (ft)	Speed (kt)	Coordinates	VPA/TCH	Navigation specification	Remarks
RNAV REBIT 1N	-	REBIT	Y	097 (089.1)	1.5	R	+13 000	-250	37°12'03.0"N 125°29'12.7"E (R 268 SEL/D70, R 283 SOT/D74)	-	RNAV 1	-

Change : Amended coordinate format.

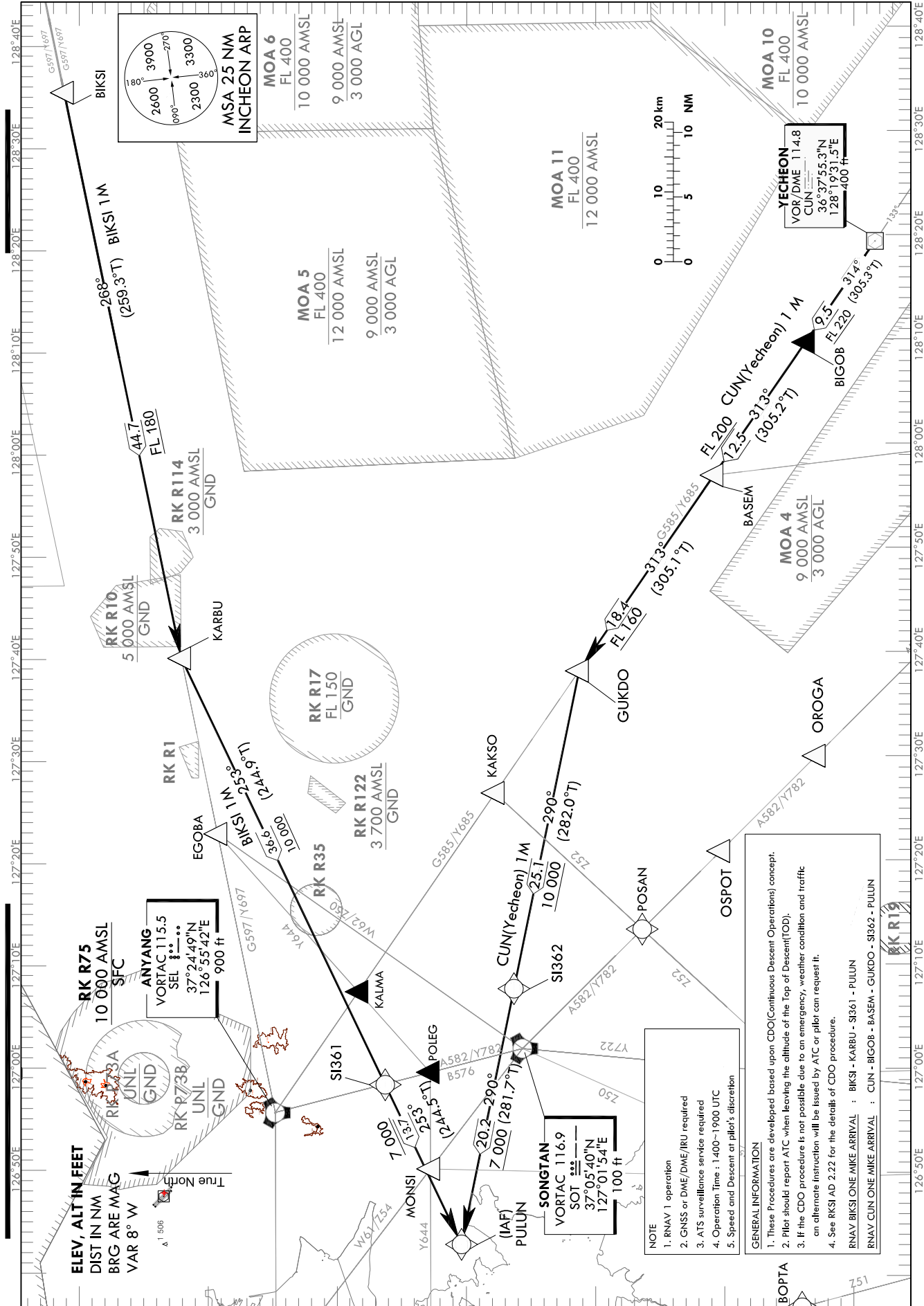
STANDARD ARRIVAL CHART
INSTRUMENT (STAR) - ICAO

TRANSITION ALT 14 000
TRANSITION LVL FL 140

SEOUL APP 119.75
119.1
INCHEON TWR 118.2
118.8

SEOUL/Incheon Intl(RKSI)
RWY 33L/R
RNAV BIKSI 1M
RNAV CUN 1M

Note : Arrival under ICAO Flight Procedure.



Change : Amended coordinate format.

NOTE
1. RNAV 1 operation
2. GNSS or DME/DME/IRU required
3. ATIS surveillance service required
4. Operation Time : 1400-1900 UTC
5. Speed and Descent at pilot's discretion

GENERAL INFORMATION
1. These Procedures are developed based upon CDO(Continuous Descent Operations) concept.
2. Pilot should report ATC when leaving the altitude of the Top of Descent(TOD).
3. If the CDO procedure is not possible due to an emergency, weather condition and traffic an alternate instruction will be issued by ATC or pilot can request it.
4. See RKSI AD 2.22 for the details of CDO procedure.
RNAV BIKSI ONE MIKE ARRIVAL : BIKSI - KARBUR - S1361 - PULUN
RNAV CUN ONE MIKE ARRIVAL : CUN - BIGOB - BASEM - GUKDO - S1362 - PULUN

ELEV, ALT IN FEET
DIST IN NM
BRG ARE MAG
VAR 8° W

True North
A 1 806

SEOUL/Incheon Intl(RKSI)
RWY 33L/R
RNAV BIKSI 1M, RNAV CUN 1M

AERONAUTICAL DATA TABULATION

Standard Instrument Arrival Procedure Coding Tables

RNAV BIKSI 1M												
Serial Number	Path Descriptor	Waypoint Identifier	Fly-over	Course/Track °M(T)	Distance (NM)	Turn direction	Altitude (ft)	Speed (kt)	Coordinates	VPA/TCH	Navigation specification	Remarks
001	IF	BIKSI	-	-	-	-	-	-	37°40'32.0"N 128°35'04.0"E (R 086 SEL/D81, R 093 KIP/D86)	-	RNAV 1	-
002	TF	KARBU	-	268 (259.3)	44.7	-	+FL 180	-	37°31'59.0"N 127°39'52.0"E (R 086 SEL/D36, R 100 KIP/D42)	-	RNAV 1	-
003	TF	S1361	-	253 (244.9)	36.6	-	+10 000	-	37°16'18.0"N 126°58'23.2"E (R 174 SEL/D99, R 161 KIP/D19)	-	RNAV 1	-
004	TF	PULUN	-	253 (244.5)	13.7	-	+7 000	-	37°10'22.2"N 126°42'55.7"E (R 223 SEL/D18, R 197 KIP/D23)	-	RNAV 1	IAF

RNAV CUN 1M												
Serial Number	Path Descriptor	Waypoint Identifier	Fly-over	Course/Track °M(T)	Distance (NM)	Turn direction	Altitude (ft)	Speed (kt)	Coordinates	VPA/TCH	Navigation specification	Remarks
001	IF	CUN	-	-	-	-	-	-	36°37'55.3"N 128°19'31.5"E (R 132 SEL/D82, R 134 KIP/D92)	-	RNAV 1	-
002	TF	BIGOB	-	314 (305.3)	9.5	-	+FL 220	-	36°43'25.4"N 128°09'52.0"E (R 132 SEL/D72, R 135 KIP/D83)	-	RNAV 1	-
003	TF	BASEM	-	313 (305.2)	12.5	-	+FL 200	-	36°50'37.2"N 127°57'09.9"E (R 132 SEL/D60, R 135 KIP/D70)	-	RNAV 1	-
004	TF	GUKDO	-	313 (305.1)	18.4	-	+FL 160	-	37°01'10.9"N 127°38'22.9"E (R 132 SEL/D41, R 136 KIP/D52)	-	RNAV 1	-
005	TF	S1362	-	290 (282.0)	25.1	-	+10 000	-	37°06'19.6"N 127°07'40.9"E (R 161 SEL/D21, R 157 KIP/D32)	-	RNAV 1	-
006	TF	PULUN	-	290 (281.7)	20.2	-	+7 000	-	37°10'22.2"N 126°42'55.7"E (R 223 SEL/D18, R 197 KIP/D23)	-	RNAV 1	IAF

Change : Amended coordinate format.

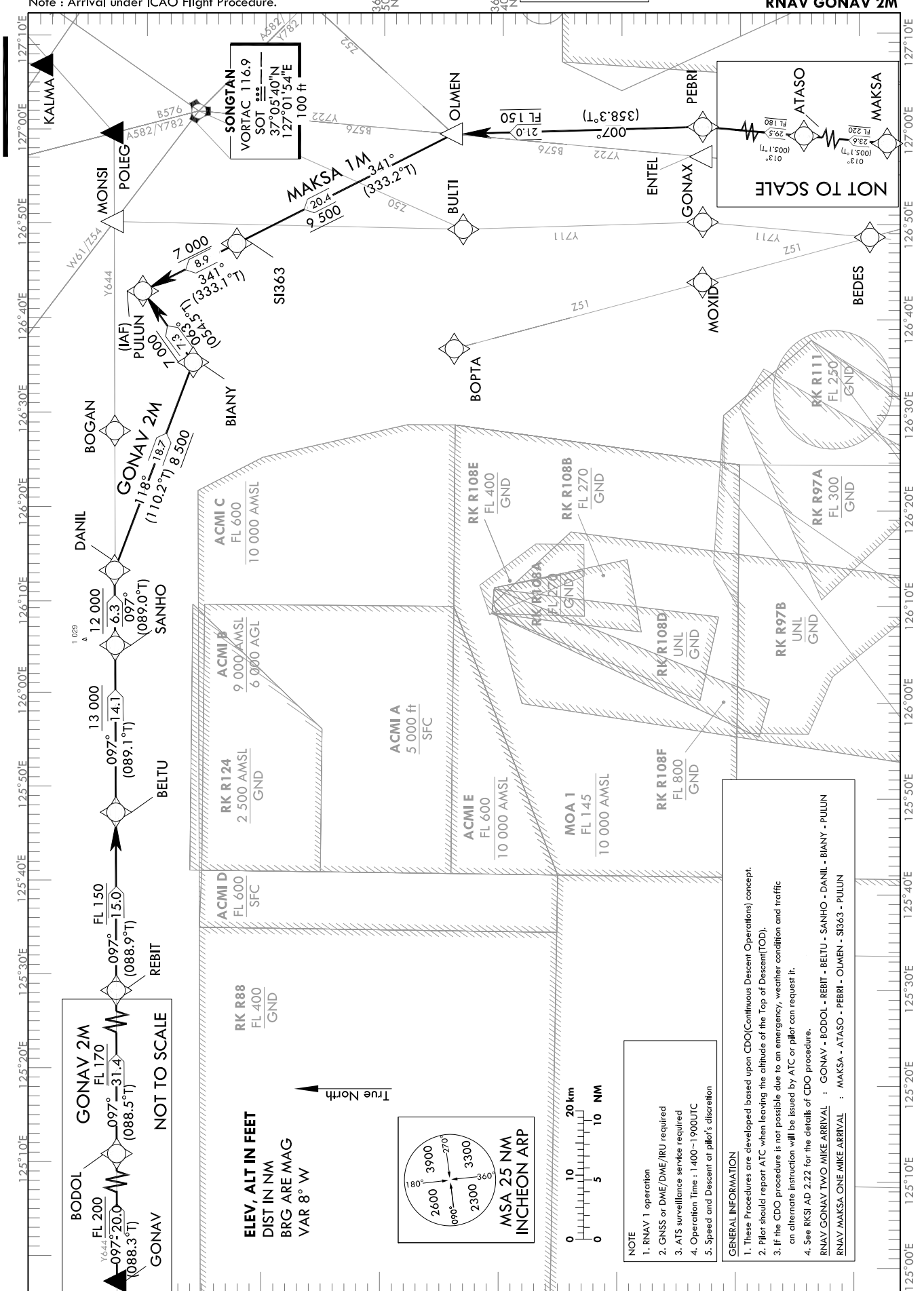
STANDARD ARRIVAL CHART
INSTRUMENT (STAR) - ICAO

TRANSITION ALT 14 000
TRANSITION LVL FL 140

SEOUL APP 119.75
119.1
INCHEON TWR 118.2
118.8

SEOUL/Incheon Intl(RKSI)
RWY 33L/R
RNAV MAKSA 1M
RNAV GONAV 2M

Note : Arrival under ICAO Flight Procedure.



Change : Amended coordinate format.

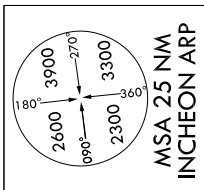
NOTE

1. RNAV 1 operation
2. GNSS or DME/DME/IRU required
3. ATIS surveillance service required
4. Operation Time : 1400-1900UTC
5. Speed and Descent at pilot's discretion

GENERAL INFORMATION

1. These Procedures are developed based upon CDO(Continuous Descent Operations) concept.
2. Pilot should report ATC when leaving the altitude of the Top of Descent(TOD).
3. If the CDO procedure is not possible due to an emergency, weather condition and traffic an alternate instruction will be issued by ATC or pilot can request it.
4. See RKSI AD 2.22 for the details of CDO procedure.

RNAV GONAV TWO MIKE ARRIVAL : GONAV - BODOL - REBIT - BELTU - SANHO - DANIL - BIANY - PULUN
RNAV MAKSA ONE MIKE ARRIVAL : MAKSA - ATASO - PEBRI - OLMEN - SI363 - PULUN



ELEV, ALT IN FEET
DIST IN NM
BRG ARE MAG
VAR 8° W

SEOUL/Incheon Intl(RKSI)
RWY 33L/R
RNAV GONAV 2M, RNAV MAKSA 1M

AERONAUTICAL DATA TABULATION

Standard Instrument Arrival Procedure Coding Tables

Serial Number	Path Descriptor	Waypoint Identifier	Fly-over	Course/Track °M(T)	Distance (NM)	Turn direction	Altitude (ft)	Speed (kt)	Coordinates	VPA/TCH	Navigation specification	Remarks
001	IF	GONAV	-	-	-	-	-	-	37°10'48.4"N 124°24'52.6"E (R 272 SEL/D121, R 267 KIP/D116)	-	RNAV 1	-
002	TF	BODOL	-	097 (088.3)	20.0	-	+FL 200	-	37°11'21.6"N 124°49'53.7"E (R 271 SEL/D101, R 265 KIP/D96)	-	RNAV 1	-
003	TF	REBIT	-	097 (088.5)	31.4	-	+FL 170	-	37°12'03.0"N 125°29'12.7"E (R 268 SEL/D70, R 259 KIP/D66)	-	RNAV 1	-
004	TF	BELTU	-	097 (088.9)	15.0	-	+FL 150	-	37°12'18.2"N 125°47'59.0"E (R 265 SEL/D55, R 254 KIP/D52)	-	RNAV 1	-
005	TF	SANHO	-	097 (089.1)	14.1	-	+13 000	-	37°12'30.7"N 126°05'34.8"E (R 261 SEL/D42, R 246 KIP/D39)	-	RNAV 1	-
006	TF	DANIL	-	097 (089.0)	6.3	-	+12 000	-	37°12'37.2"N 126°13'28.7"E (R 258 SEL/D36, R 241 KIP/D34)	-	RNAV 1	-
007	TF	BIANY	-	118 (110.2)	18.7	-	+8 500	-	37°06'06.2"N 126°35'26.7"E (R 229 SEL/D25, R 207 KIP/D29)	-	RNAV 1	-
008	TF	PULUN	-	063 (054.5)	7.3	-	+7 000	-	37°10'22.2"N 126°42'55.7"E (R 223 SEL/D18, R 197 KIP/D23)	-	RNAV 1	IAF

Serial Number	Path Descriptor	Waypoint Identifier	Fly-over	Course/Track °M(T)	Distance (NM)	Turn direction	Altitude (ft)	Speed (kt)	Coordinates	VPA/TCH	Navigation specification	Remarks
001	IF	MAKSA	-	-	-	-	-	-	35°30'11.3"N 126°54'22.0"E (R 189 SEL/D114, R 185 KIP/D123)	-	RNAV 1	-
002	TF	ATASO	-	013 (005.1)	23.6	-	+FL 220	-	35°53'43.6"N 126°56'57.0"E (R 187 SEL/D91, R 184 KIP/D100)	-	RNAV 1	-
003	TF	PEBRI	-	013 (005.1)	29.5	-	+FL 180	-	36°23'10.8"N 127°00'13.3"E (R 185 SEL/D62, R 180 KIP/D71)	-	RNAV 1	-
004	TF	OLWEN	-	007 (358.3)	21.0	-	+FL 150	-	36°44'13.4"N 126°59'27.6"E (R 184 SEL/D41, R 177 KIP/D50)	-	RNAV 1	-
005	TF	S1363	-	341 (333.2)	20.4	-	+9 500	-	37°02'27.1"N 126°47'57.6"E (R 204 SEL/D23, R 187 KIP/D31)	-	RNAV 1	-
006	TF	PULUN	-	341 (333.1)	8.9	-	+7 000	-	37°10'22.2"N 126°42'55.7"E (R 223 SEL/D18, R 197 KIP/D23)	-	RNAV 1	IAF

Change : Amended coordinate format.

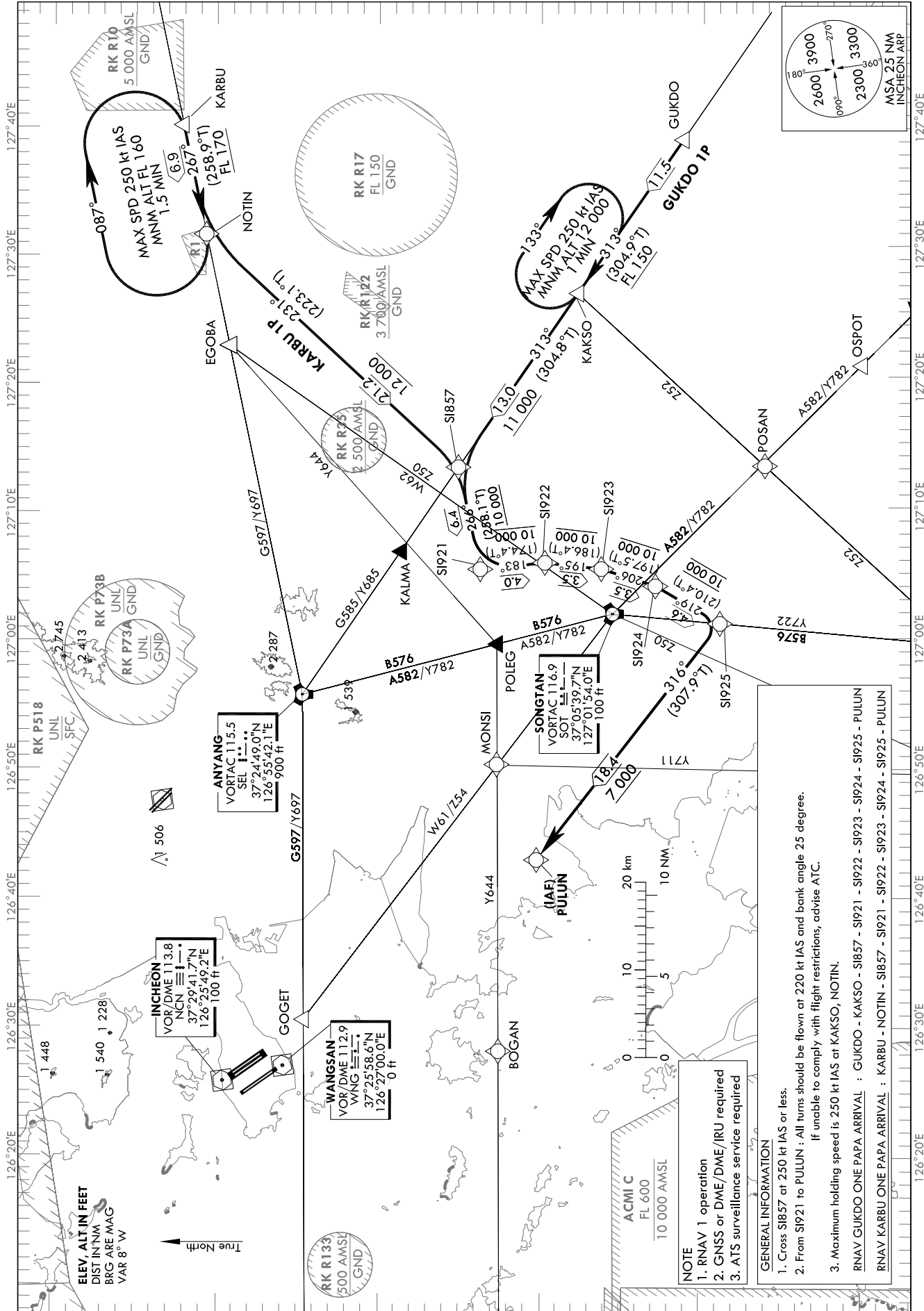
STANDARD ARRIVAL CHART
INSTRUMENT (STAR) - ICAO

TRANSITION ALT 14 000
TRANSITION LVL FL 140

SEOUL APP 119.75
119.1
INCHEON TWR 118.2
118.8

SEOUL/Incheon Intl(RKSI)
RWY 33L/R RWY 34
RNAV GUKDO 1P
RNAV KARBU 1P

Note : Arrival under ICAO Flight Procedures.



SEOUL/Incheon Intl(RKSI)
RWY 33L/R RWY 34
RNAV GUKDO 1P RNAV KARBU 1P

AERONAUTICAL DATA TABULATION

Standard Instrument Arrival Procedure Coding Tables

Serial Number	Path Descriptor	Waypoint Identifier	Fly-over	Course/Track °M(°T)	Distance (NM)	Turn direction	Altitude (ft)	Speed (kt)	Coordinates	VPA/TCH	Navigation specification	Remarks
001	IF	GUKDO	-	-	-	-	-	-	37°01'10.9"N 127°38'22.6"E (R 132 SEL/D42, R 106 SOT/D30)	-	RNAV 1	-
002	TF	KAKSO	-	313 (304.9)	11.5	-	+FL 150	-	37°07'44.6"N 127°26'37.4"E (R 132 SEL/D30, R 092 SOT/D20)	-	RNAV 1	-
003	TF	S1857	-	313 (304.8)	13.0	-	+11 000	-250	37°15'10.0"N 127°13'15.0"E (R 132 SEL/D17, R 052 SOT/D13)	-	RNAV 1	-
004	TF	S1921	-	266 (258.1)	6.4	-	+10 000	@220	37°13'49.9"N 127°05'22.0"E (R 124 NCN/D35, R 119 WNG/D33)	-	RNAV 1	-
005	TF	S1922	-	183 (174.4)	4.0	-	+10 000	@220	37°09'50.7"N 127°05'51.2"E (R 130 NCN/D38, R 125 WNG/D35)	-	RNAV 1	Bank angle 25°
006	TF	S1923	-	195 (186.4)	3.5	-	+10 000	@220	37°06'21.7"N 127°05'22.1"E (R 134 NCN/D39, R 130 WNG/D36)	-	RNAV 1	Bank angle 25°
007	TF	S1924	-	206 (197.5)	3.5	-	+10 000	@220	37°03'01.2"N 127°04'03.0"E (R 139 NCN/D41, R 136 WNG/D37)	-	RNAV 1	Bank angle 25°
008	TF	S1925	-	219 (210.4)	4.6	-	@10 000	@220	36°59'02.9"N 127°01'08.5"E (R 145 NCN/D42, R 142 WNG/D38)	-	RNAV 1	Bank angle 25°
009	TF	PULUN	-	316 (307.9)	18.4	-	+7 000	@220	37°10'22.2"N 126°42'55.7"E (R 153 NCN/D24, R 149 WNG/D20)	-	RNAV 1	IAF

Serial Number	Path Descriptor	Waypoint Identifier	Fly-over	Course/Track °M(°T)	Distance (NM)	Turn direction	Altitude (ft)	Speed (kt)	Coordinates	VPA/TCH	Navigation specification	Remarks
001	IF	KARBU	-	-	-	-	-	-	37°31'59.0"N 127°39'52.0"E (R 086 SEL/D36, R 057 SOT/D40)	-	RNAV 1	-
002	TF	NOTIN	-	267 (258.9)	6.9	-	+FL 170	-	37°30'39.1"N 127°31'22.9"E (R 086 SEL/D29, R 051 SOT/D34)	-	RNAV 1	-
003	TF	S1857	-	231 (223.1)	21.2	-	+12 000	-250	37°15'10.0"N 127°13'15.0"E (R 132 SEL/D17, R 052 SOT/D13)	-	RNAV 1	-
004	TF	S1921	-	266 (258.1)	6.4	-	+10 000	@220	37°13'49.9"N 127°05'22.0"E (R 124 NCN/D35, R 119 WNG/D33)	-	RNAV 1	-
005	TF	S1922	-	183 (174.4)	4.0	-	+10 000	@220	37°09'50.7"N 127°05'51.2"E (R 130 NCN/D38, R 125 WNG/D35)	-	RNAV 1	Bank angle 25°
006	TF	S1923	-	195 (186.4)	3.5	-	+10 000	@220	37°06'21.7"N 127°05'22.1"E (R 134 NCN/D39, R 130 WNG/D36)	-	RNAV 1	Bank angle 25°
007	TF	S1924	-	206 (197.5)	3.5	-	+10 000	@220	37°03'01.2"N 127°04'03.0"E (R 139 NCN/D41, R 136 WNG/D37)	-	RNAV 1	Bank angle 25°
008	TF	S1925	-	219 (210.4)	4.6	-	@10 000	@220	36°59'02.9"N 127°01'08.5"E (R 145 NCN/D42, R 142 WNG/D38)	-	RNAV 1	Bank angle 25°
009	TF	PULUN	-	316 (307.9)	18.4	-	+7 000	@220	37°10'22.2"N 126°42'55.7"E (R 153 NCN/D24, R 149 WNG/D20)	-	RNAV 1	IAF

HOLDING PROCEDURE

Holding Identification	Path Descriptor	Waypoint Identifier	Fly-over	Course/Track °M(°T)	Distance (NM)	Time (min)	Turn direction	Altitude (ft)	Speed (kt)	Coordinates	VPA/TCH	Navigation specification	Remarks
RNAV GUKDO 1P	-	KAKSO	Y	313 (304.9)	11.5	1	R	+12 000	-250	37°07'44.6"N 127°26'37.4"E (R 132 SEL/D30, R 092 SOT/D20)	-	RNAV 1	-
RNAV KARBU 1P	-	NOTIN	Y	267 (258.9)	6.9	1.5	R	+FL 160	-250	37°30'39.1"N 127°31'22.9"E (R 086 SEL/D29, R 051 SOT/D34)	-	RNAV 1	-

Change : Amended coordinate format.

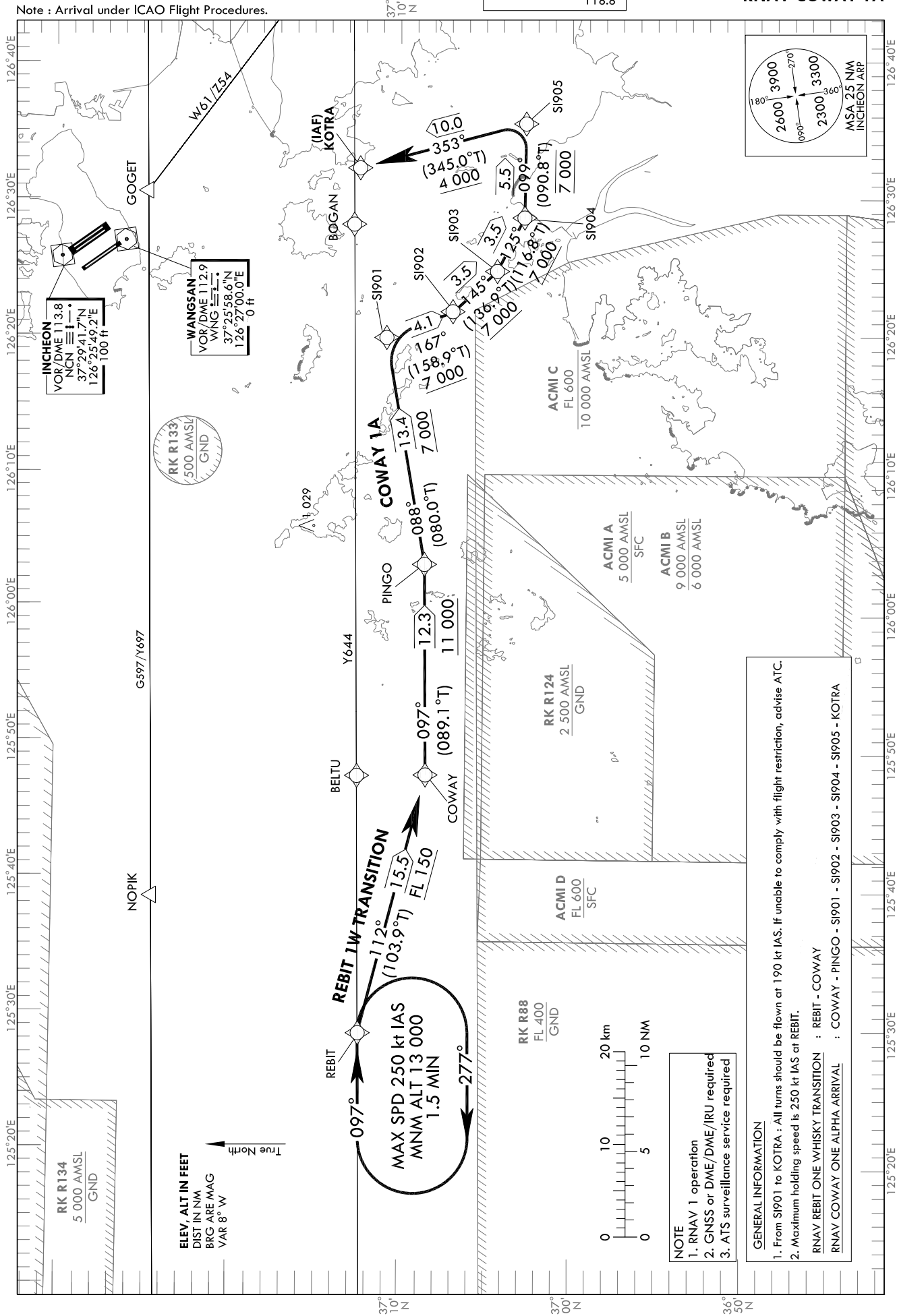
STANDARD ARRIVAL CHART
INSTRUMENT (STAR) - ICAO

TRANSITION ALT 14 000
TRANSITION LVL FL 140

SEOUL APP 119.75
119.1
INCHEON TWR 118.2
118.8

SEOUL/Incheon Intl(RKSI)
RWY 33L/R RWY 34
RNAV COWAY 1A

Note : Arrival under ICAO Flight Procedures.



SEOUL/Incheon Intl(RKSI)
RWY 33L/R RWY 34
RNAV REBIT 1W TRANSITION, RNAV COWAY 1A
AERONAUTICAL DATA TABULATION

Standard Instrument Arrival Procedure Coding Tables

RNAV REBIT 1W TRANSITION

Serial Number	Path Descriptor	Waypoint Identifier	Fly-over	Course/Track °M(T)	Distance (NM)	Turn direction	Altitude (ft)	Speed (kt)	Coordinates	VPA/TCH	Navigation specification	Remarks
001	IF	REBIT	-	-	-	-	-	-	37°12'03.0"N 125°29'12.7"E (R 268 SEL/D70, R 283 SOT/D74)	-	RNAV 1	-
002	TF	COWAY	-	112 (103.9)	15.5	-	+FL 150	-	37°08'17.9"N 125°48'04.6"E (R 261 SEL/D56, R 281 SOT/D59)	-	RNAV 1	-

RNAV COWAY 1A

Serial Number	Path Descriptor	Waypoint Identifier	Fly-over	Course/Track °M(T)	Distance (NM)	Turn direction	Altitude (ft)	Speed (kt)	Coordinates	VPA/TCH	Navigation specification	Remarks
001	IF	COWAY	-	-	-	-	+FL 150	-	37°08'17.9"N 125°48'04.6"E (R 261 SEL/D56, R 281 SOT/D59)	-	RNAV 1	-
002	TF	PINGO	-	097 (089.1)	12.3	-	+11 000	-	37°08'28.1"N 126°03'25.2"E (R 257 SEL/D45, R 282 SOT/D47)	-	RNAV 1	-
003	TF	SI901	-	088 (080.0)	13.4	-	+7 000	@190	37°10'46.2"N 126°19'55.9"E (R 202 NCN/D20, R 208 WING/D16)	-	RNAV 1	-
004	TF	SI902	-	167 (158.9)	4.1	-	+7 000	@190	37°06'54.2"N 126°21'47.8"E (R 196 NCN/D23, R 200 WING/D20)	-	RNAV 1	-
005	TF	SI903	-	145 (136.9)	3.5	-	+7 000	@190	37°04'20.7"N 126°24'47.1"E (R 190 NCN/D25, R 193 WING/D22)	-	RNAV 1	-
006	TF	SI904	-	125 (116.8)	3.5	-	+7 000	@190	37°02'46.0"N 126°28'41.4"E (R 183 NCN/D27, R 185 WING/D23)	-	RNAV 1	-
007	TF	SI905	-	099 (090.8)	5.5	-	@7 000	@190	37°02'41.1"N 126°35'32.1"E (R 172 NCN/D28, R 172 WING/D24)	-	RNAV 1	-
008	TF	KOTRA	-	353 (345.0)	10.0	-	+4 000	@190	37°12'21.3"N 126°32'17.4"E (R 171 NCN/D18, R 171 WING/D14)	-	RNAV 1	IAF

HOLDING PROCEDURE

Holding Identification	Path Descriptor	Waypoint Identifier	Fly-over	Course/Track °M(T)	Distance (NM)	Turn direction	Altitude (ft)	Speed (kt)	Coordinates	VPA/TCH	Navigation specification	Remarks
RNAV REBIT 1W TRANSITION	-	REBIT	Y	097 (089.1)	1.5	R	+13 000	-250	37°12'03.0"N 125°29'12.7"E (R 268 SEL/D70, R 283 SOT/D74)	-	RNAV 1	-

Change : Amended coordinate format.

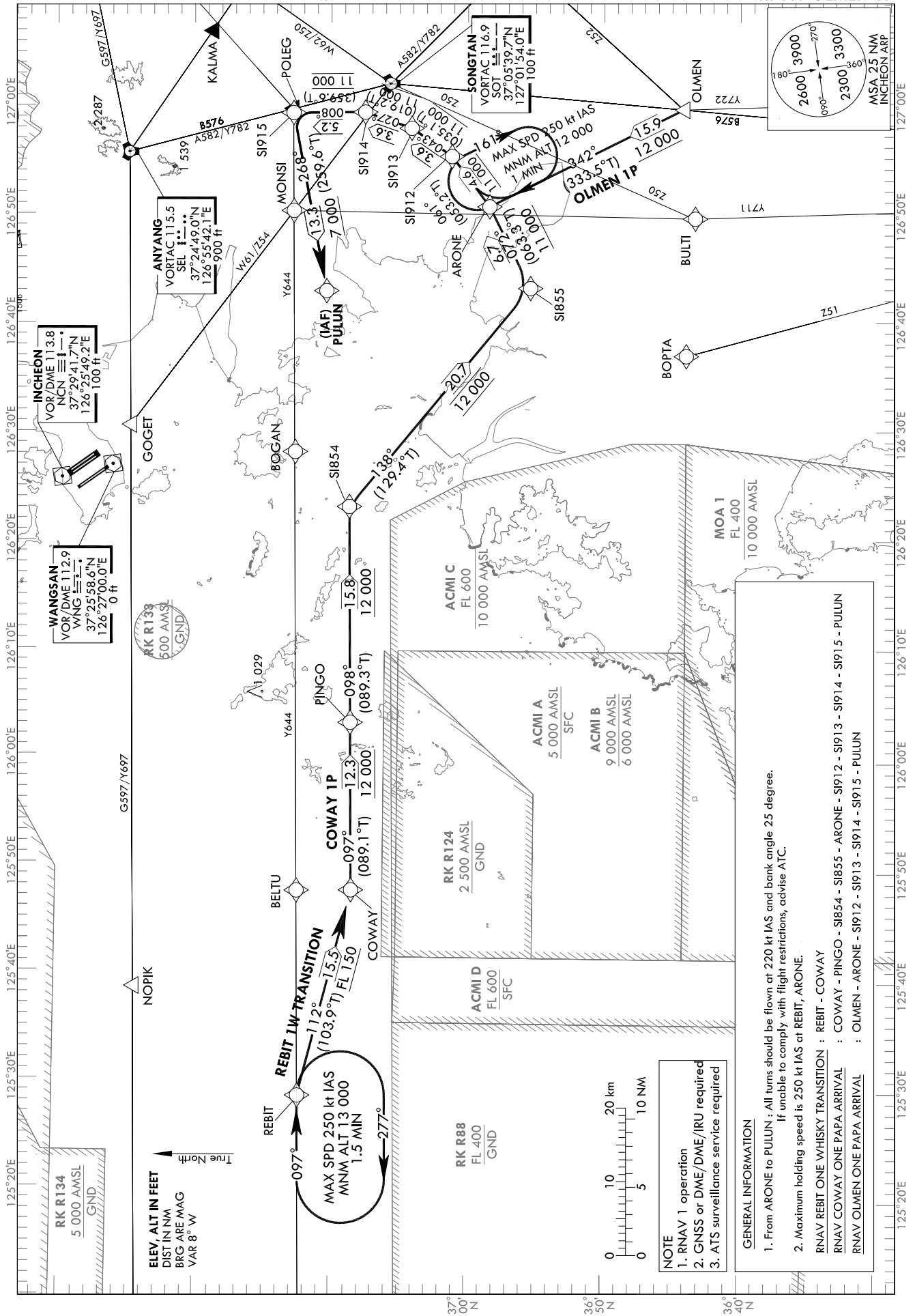
STANDARD ARRIVAL CHART INSTRUMENT (STAR) - ICAO

TRANSITION ALT 14 000 TRANSITION LVL FL 140

SEOUL APP 119.75 119.1 INCHEON TWR 118.2 118.8

SEOUL/Incheon Intl(RKSI) RWY 33L/R RWY 34 RNAV COWAY 1P RNAV OLMEN 1P

Note : Arrival under ICAO Flight Procedures.



SEOUL/Incheon Intl(RKSI)
RWY 33L/R RWY 34
RNAV REBIT 1W TRANSITION, RNAV COWAY 1P,
RNAV OLMEN 1P
AERONAUTICAL DATA TABULATION

Standard Instrument Arrival Procedure Coding Tables

RNAV REBIT 1W TRANSITION										
Serial Number	Path Descriptor	Waypoint Identifier	Fly-over	Course/Track °M(°T)	Distance (NM)	Turn direction	Altitude (ft)	Speed (kt)	Coordinates	Remarks
001	IF	RBIT	-	-	-	-	-	-	37°12'03.0"N 125°29'12.7"E (R 268 SEL/D70, R 283 SOT/D74)	-
002	TF	COWAY	-	112 (103.9)	15.5	-	+FL 150	-	37°08'17.9"N 125°48'04.6"E (R 261 SEL/D56, R 281 SOT/D59)	-

RNAV COWAY 1P										
Serial Number	Path Descriptor	Waypoint Identifier	Fly-over	Course/Track °M(°T)	Distance (NM)	Turn direction	Altitude (ft)	Speed (kt)	Coordinates	Remarks
001	IF	COWAY	-	-	-	-	+FL 150	-	37°08'17.9"N 125°48'04.6"E (R 261 SEL/D56, R 281 SOT/D59)	-
002	TF	PINGO	-	097 (089.1)	12.3	-	+12 000	-	37°08'28.1"N 126°03'25.2"E (R 257 SEL/D45, R 282 SOT/D47)	-
003	TF	S1854	-	098 (089.3)	15.8	-	+12 000	-	37°08'38.3"N 126°23'10.7"E (R 246 SEL/D31, R 284 SOT/D31)	-
004	TF	S1855	-	138 (129.4)	20.7	-	@12 000	-	36°55'25.7"N 126°43'10.4"E (R 207 SEL/D31, R 244 SOT/D18)	-
005	TF	ARONE	-	072 (063.3)	6.7	-	+11 000	@220	36°58'25.6"N 126°50'37.3"E (R 197 SEL/D27, R 239 SOT/D12)	-
006	TF	S1912	-	061 (053.2)	4.6	-	+11 000	@220	37°01'11.1"N 126°55'13.2"E (R 189 SEL/D24, R 238 SOT/D7)	Bank angle 25°
007	TF	S1913	-	043 (035.1)	3.6	-	+11 000	@220	37°04'08.0"N 126°57'48.4"E (R 183 SEL/D21, R 253 SOT/D4)	Bank angle 25°
008	TF	S1914	-	027 (019.2)	3.6	-	+11 000	@220	37°07'32.3"N 126°59'17.2"E (R 178 SEL/D18, R 320 SOT/D3)	Bank angle 25°
009	TF	S1915	-	008 (359.6)	5.2	-	@11 000	@220	37°12'47.4"N 126°59'14.6"E (R 175 SEL/D12, R 351 SOT/D7)	Bank angle 25°
010	TF	PULUN	-	268 (259.6)	13.3	-	+7 000	@220	37°10'22.2"N 126°42'55.7"E (R 153 NCN/D24, R 149 WNG/D20)	IAF

RNAV OLMEN 1P										
Serial Number	Path Descriptor	Waypoint Identifier	Fly-over	Course/Track °M(°T)	Distance (NM)	Turn direction	Altitude (ft)	Speed (kt)	Coordinates	Remarks
001	IF	OLMEN	-	-	-	-	-	-	36°44'13.4"N 126°59'27.6"E (R 184 SEL/D41, R 193 SOT/D22)	-
002	TF	ARONE	-	342 (333.5)	15.9	-	+12 000	@220	36°58'25.6"N 126°50'37.3"E (R 197 SEL/D27, R 239 SOT/D12)	-
003	TF	S1912	-	061 (053.2)	4.6	-	+11 000	@220	37°01'11.1"N 126°55'13.2"E (R 189 SEL/D24, R 238 SOT/D7)	Bank angle 25°
004	TF	S1913	-	043 (035.1)	3.6	-	+11 000	@220	37°04'08.0"N 126°57'48.4"E (R 183 SEL/D21, R 253 SOT/D4)	Bank angle 25°
005	TF	S1914	-	027 (019.2)	3.6	-	+11 000	@220	37°07'32.3"N 126°59'17.2"E (R 178 SEL/D18, R 320 SOT/D3)	Bank angle 25°
006	TF	S1915	-	008 (359.6)	5.2	-	@11 000	@220	37°12'47.4"N 126°59'14.6"E (R 175 SEL/D12, R 351 SOT/D7)	Bank angle 25°
007	TF	PULUN	-	268 (259.6)	13.3	-	+7 000	@220	37°10'22.2"N 126°42'55.7"E (R 153 NCN/D24, R 149 WNG/D20)	IAF

HOLDING PROCEDURE										
Holding Identification	Path Descriptor	Waypoint Identifier	Fly-over	Course/Track °M(°T)	Distance (NM)	Turn direction	Altitude (ft)	Speed (kt)	Coordinates	Remarks
RNAV RBIT 1W TRANSITION	-	RBIT	Y	097 (089.1)	1.5	R	+13 000	-250	37°12'03.0"N 125°29'12.7"E (R 268 SEL/D70, R 283 SOT/D74)	RNAV 1
RNAV OLMEN 1P	-	ARONE	Y	341 (333.5)	1	R	+12 000	-250	36°58'25.6"N 126°50'37.3"E (R 197 SEL/D27, R 239 SOT/D12)	RNAV 1

Change : Amended coordinate format.